

Wichtige Artefakte

ABSCHLUSSKURS GEFÄSSE 2024

SCHWEIZER GESELLSCHAFT FÜR ULTRASCHALL IN DER MEDIZIN SGUM – SEKTION GEFÄSSE



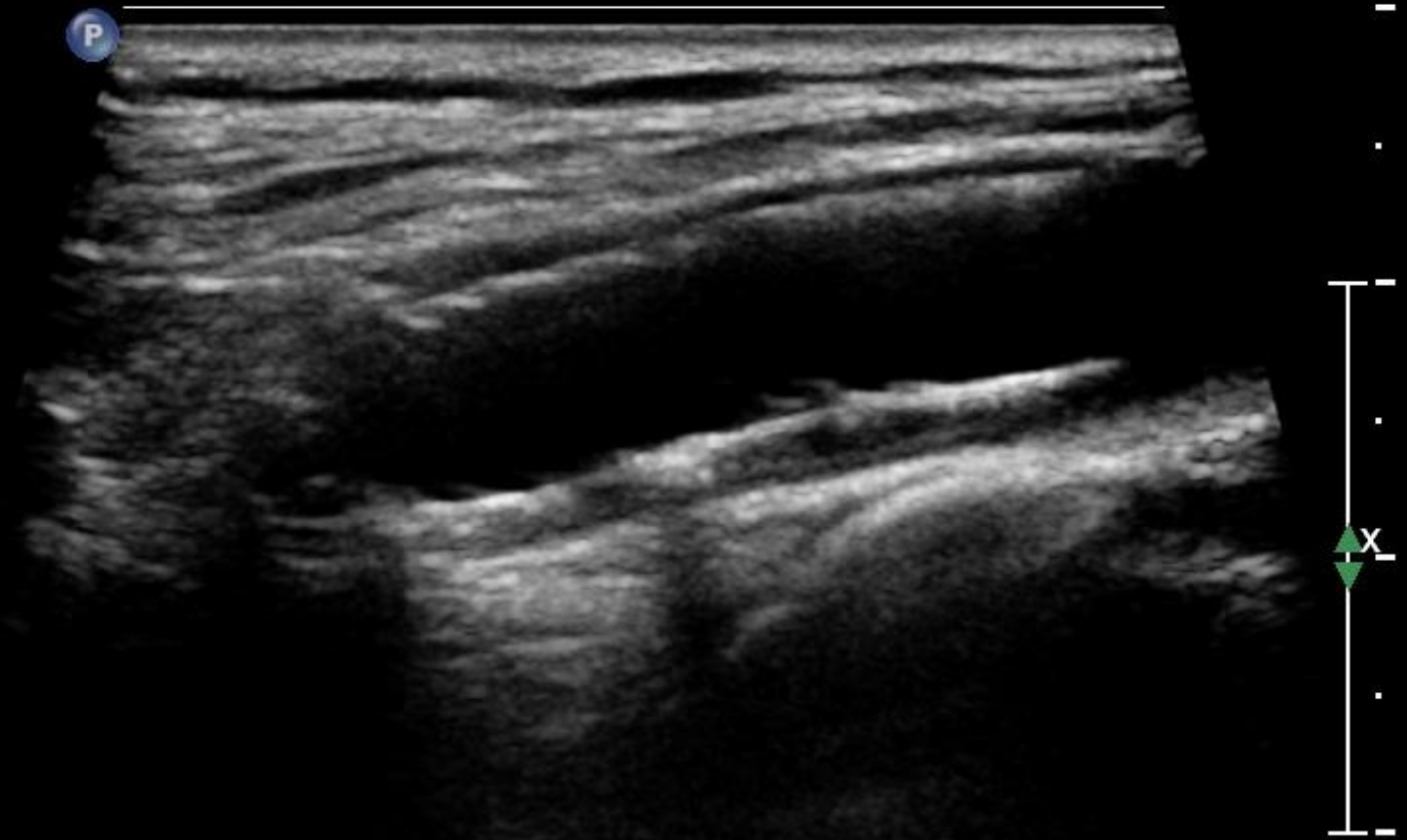
Prof. Dr. med. Christoph Thalhammer
Chefarzt

Basel, 25. April 2024

BF 28Hz
A/G

2D
49%
K 50
M Niedrig
HAufI

S2

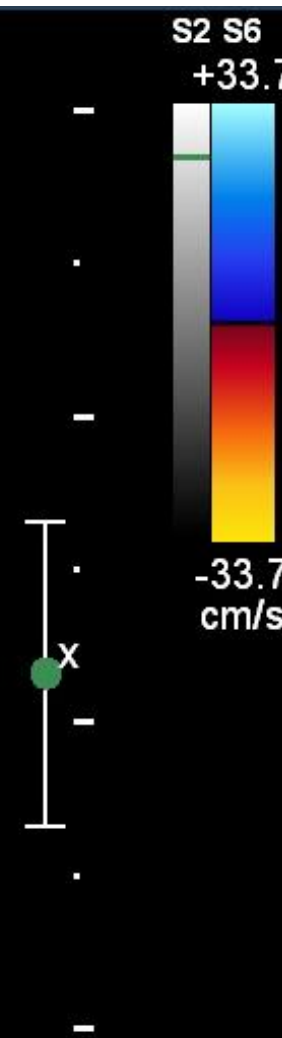
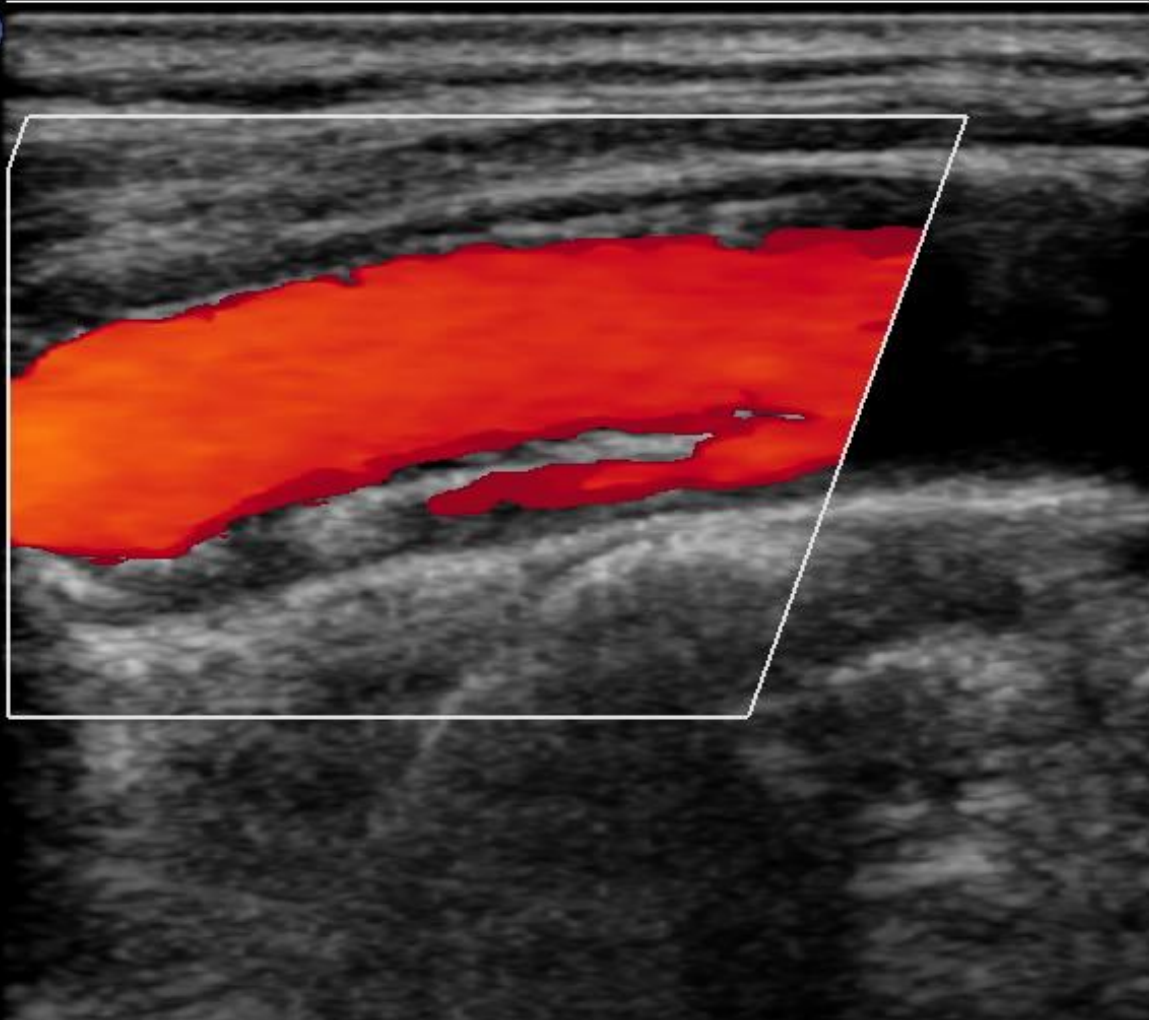


BF 20Hz
A1

2D
63%
K 50
M Niedrig
Allg

FD
71%
3500Hz
WF 227Hz
Mittel

P

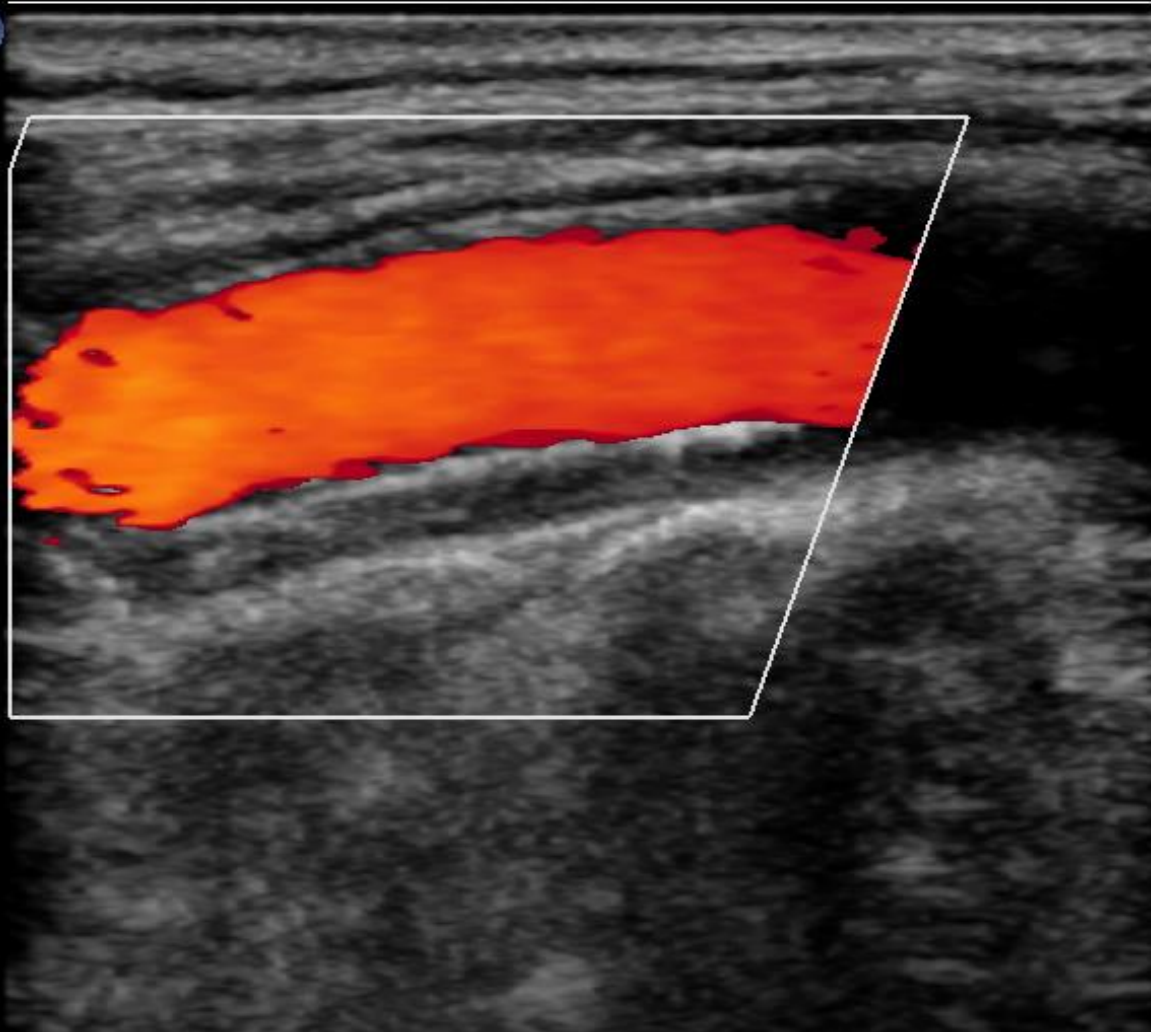


BF 20Hz
A1

2D
63%
K 50
M Niedrig
Allg

FD
55%
3500Hz
WF 227Hz
Mittel

P

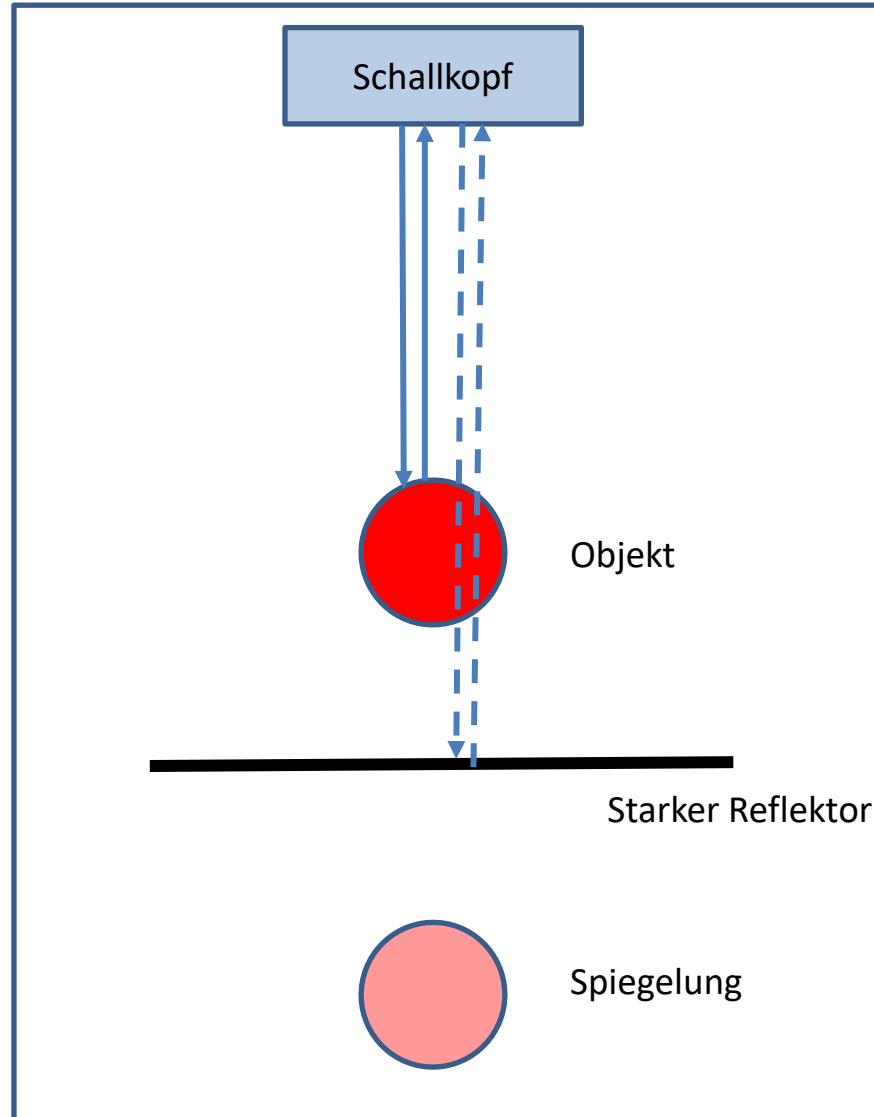


S2 S6
+33.7

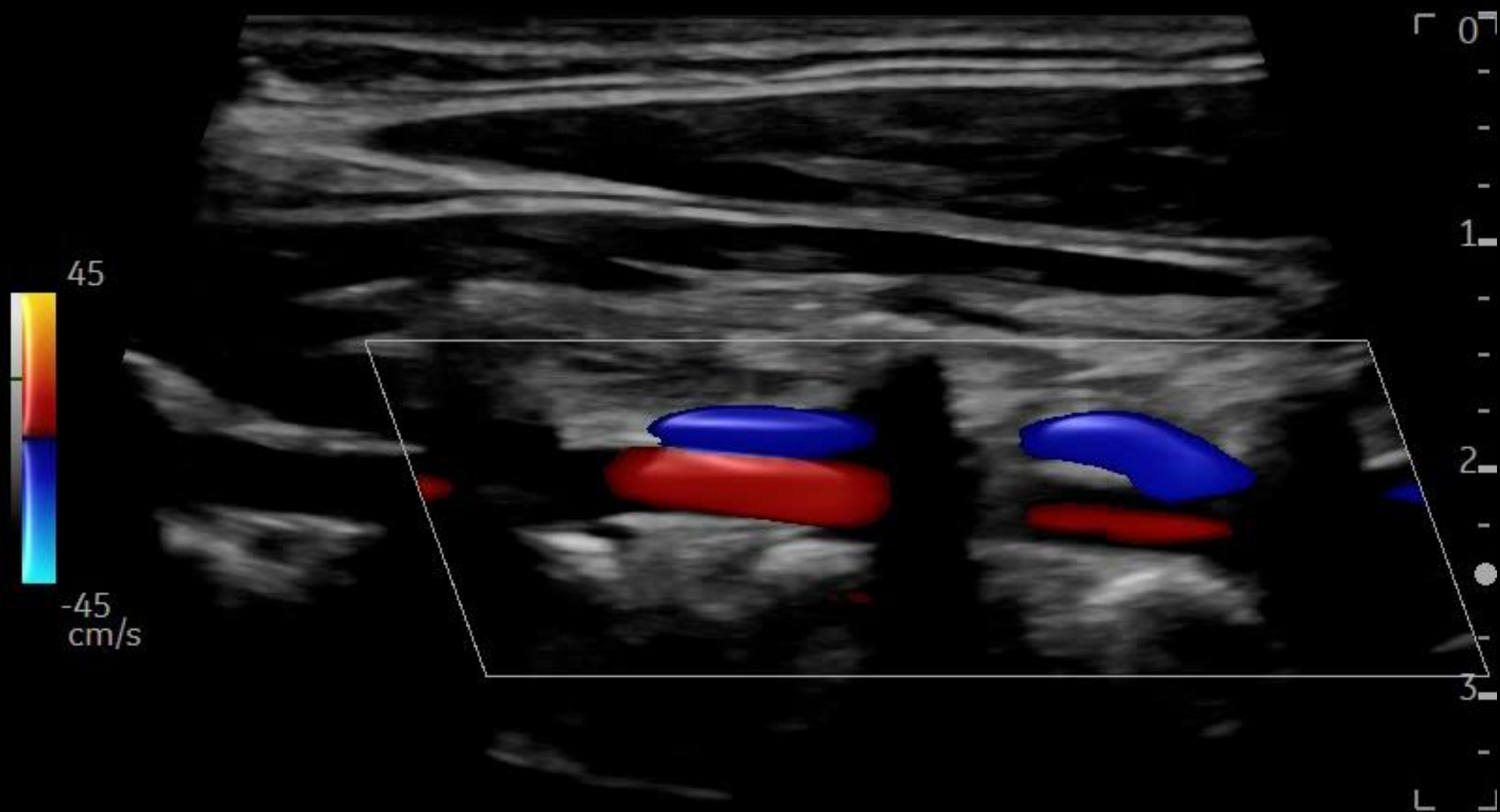




Spiegelartefakt



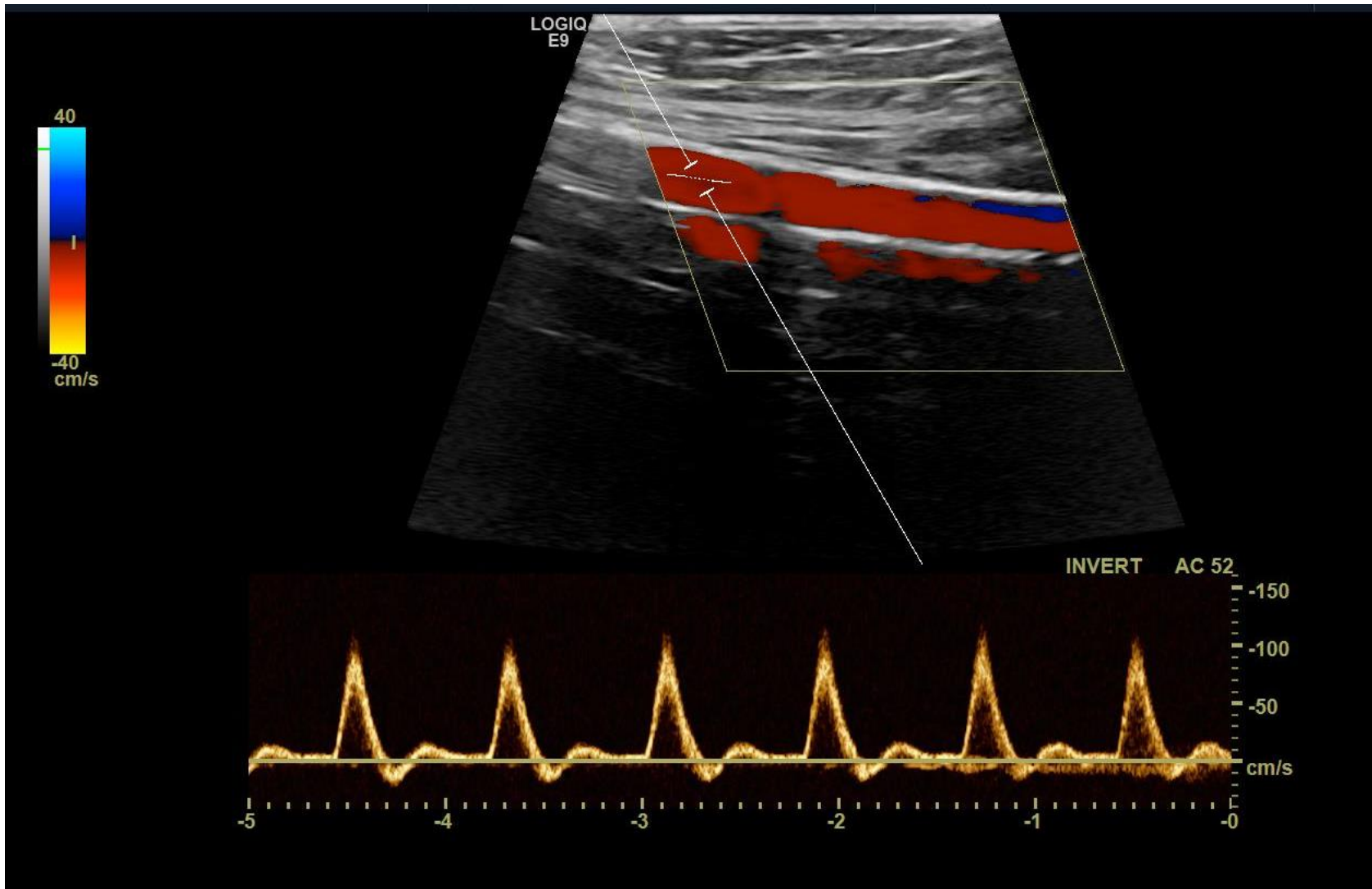
LOGIQ

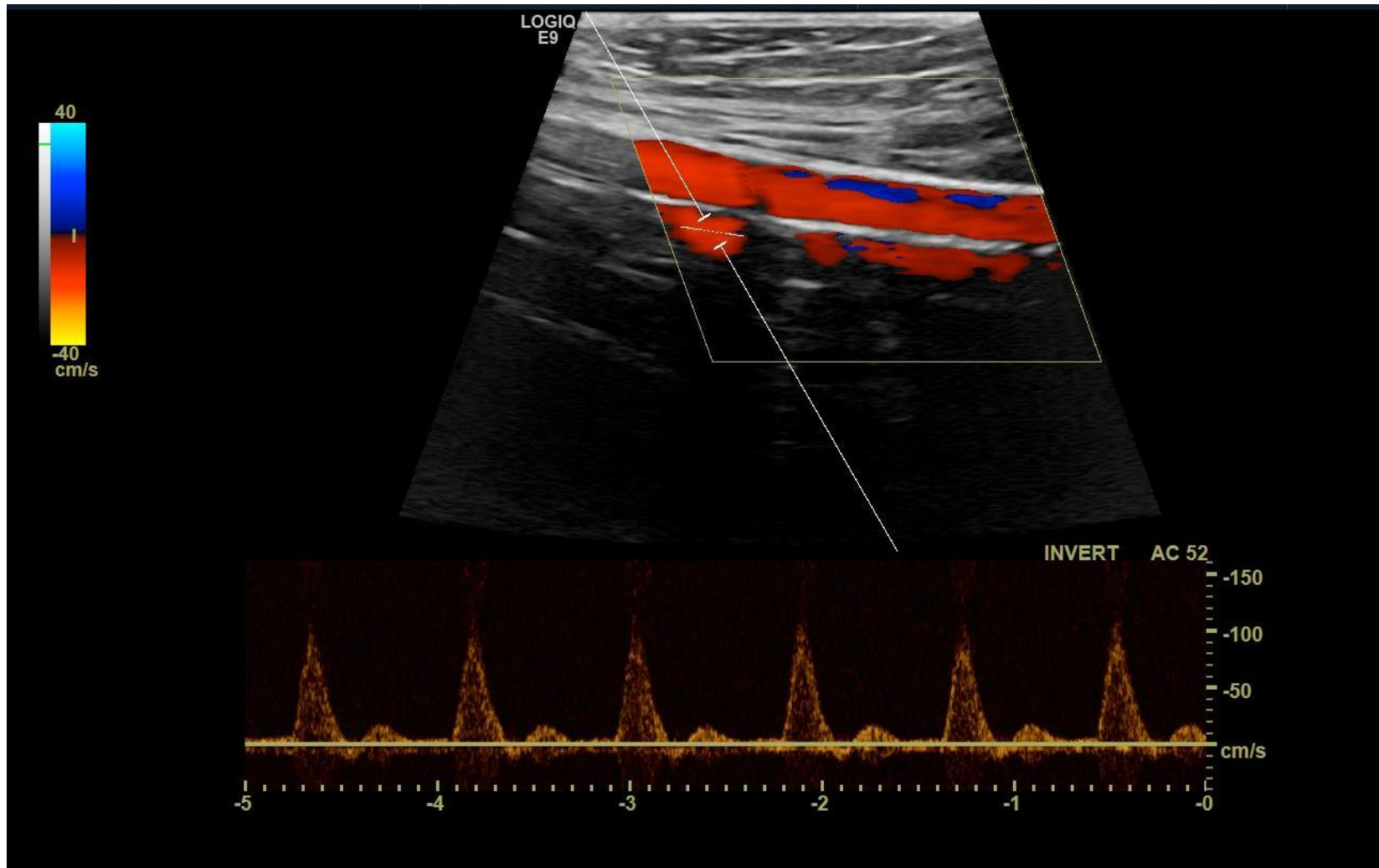


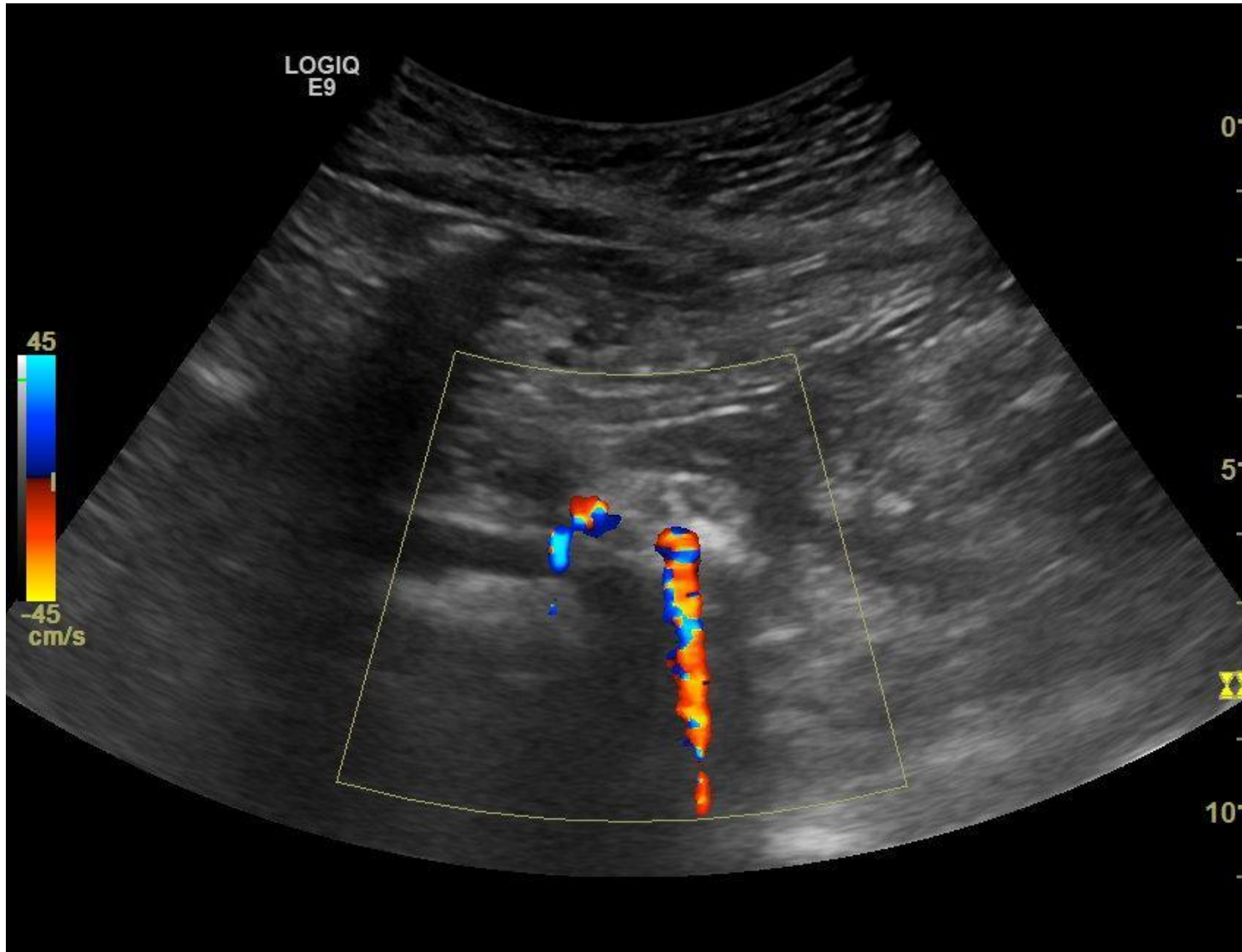
LOGIQ
E9

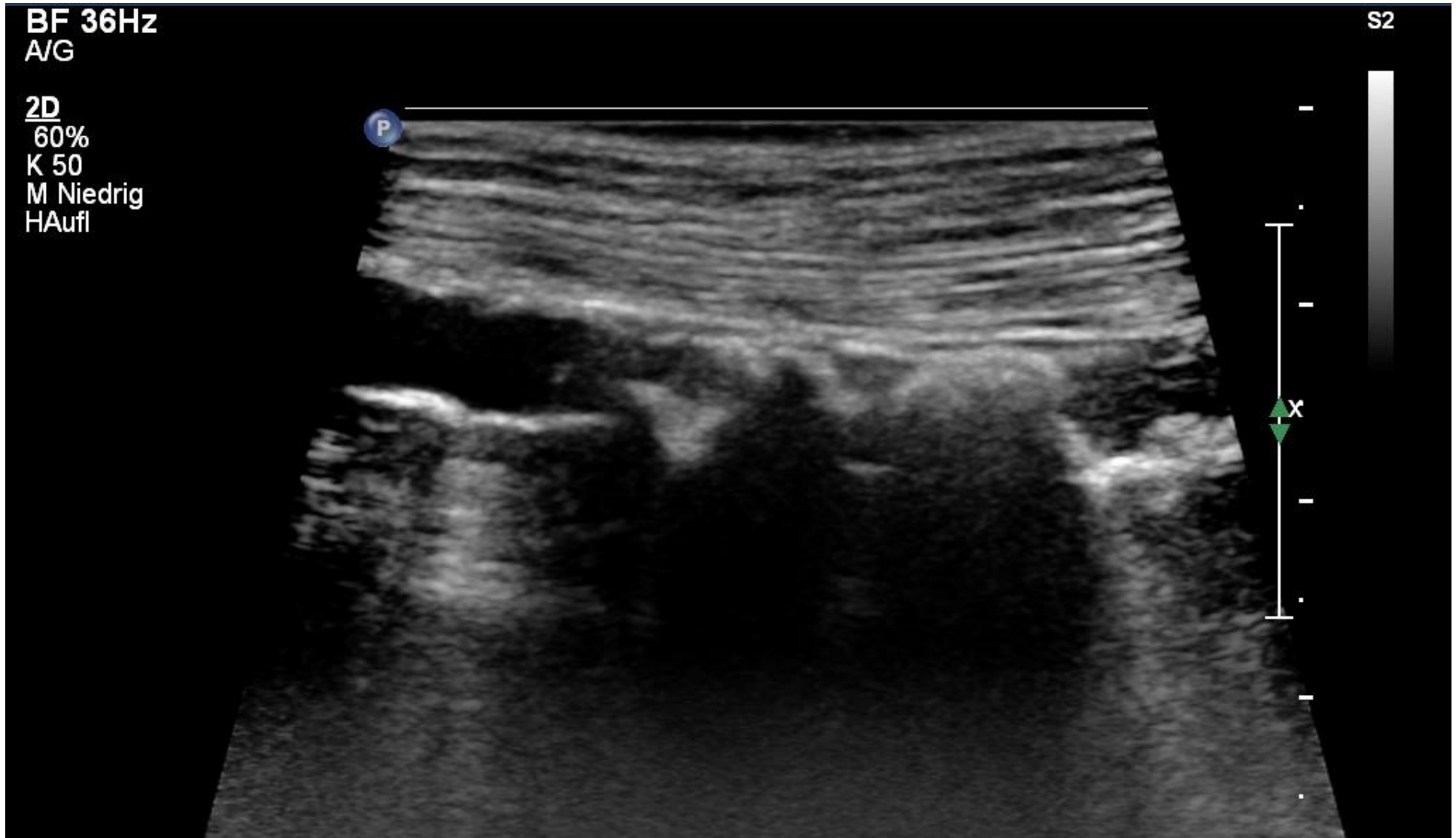
Schallschatten









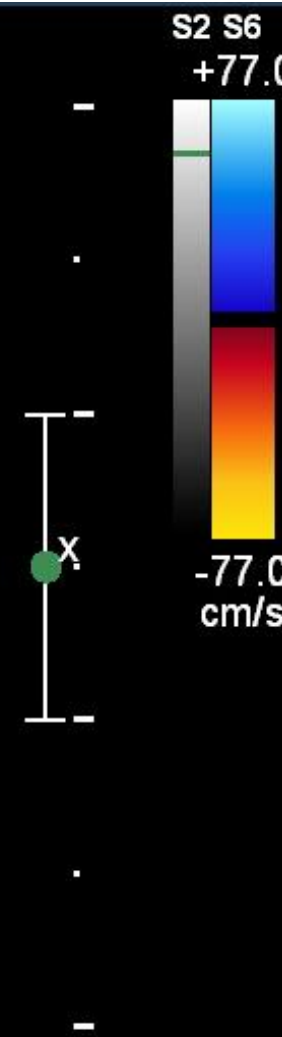
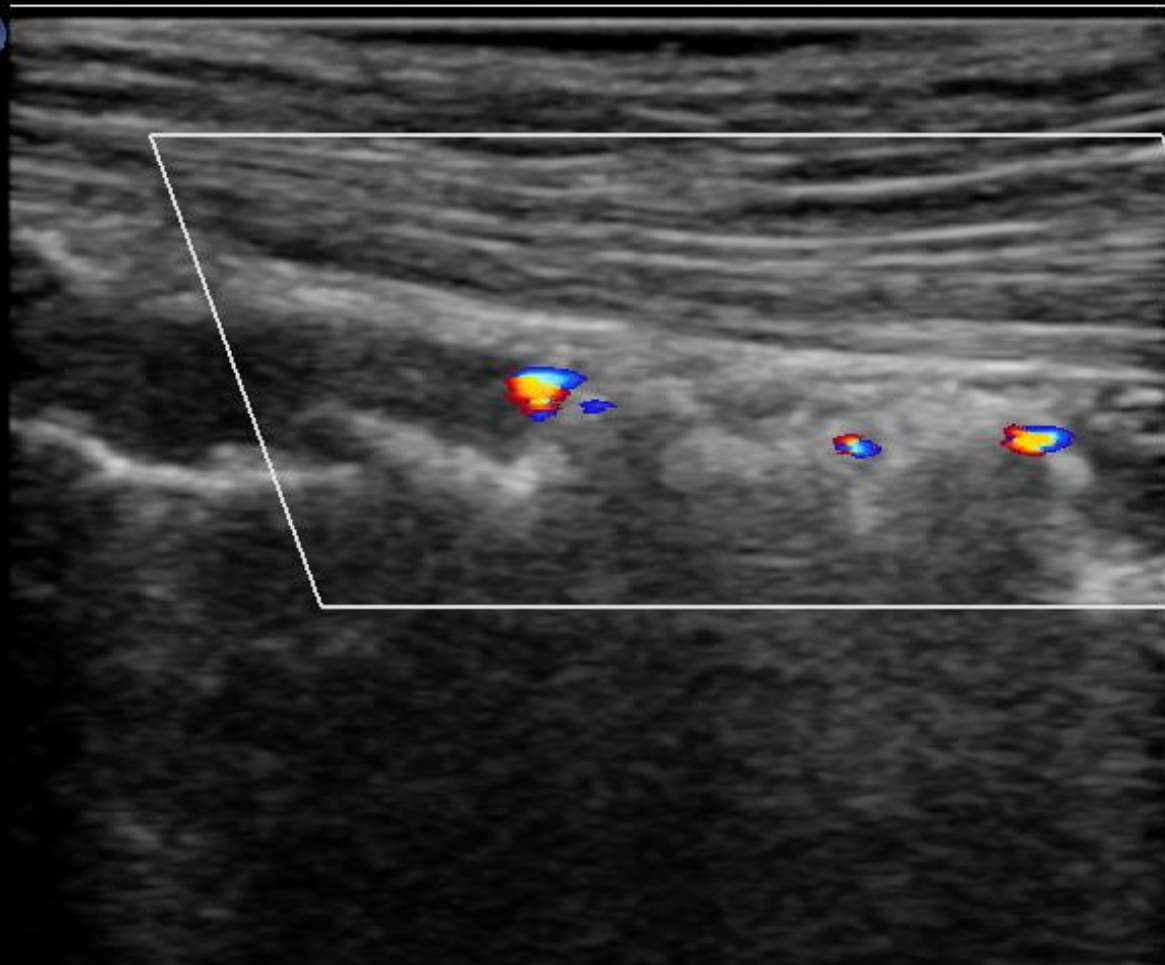


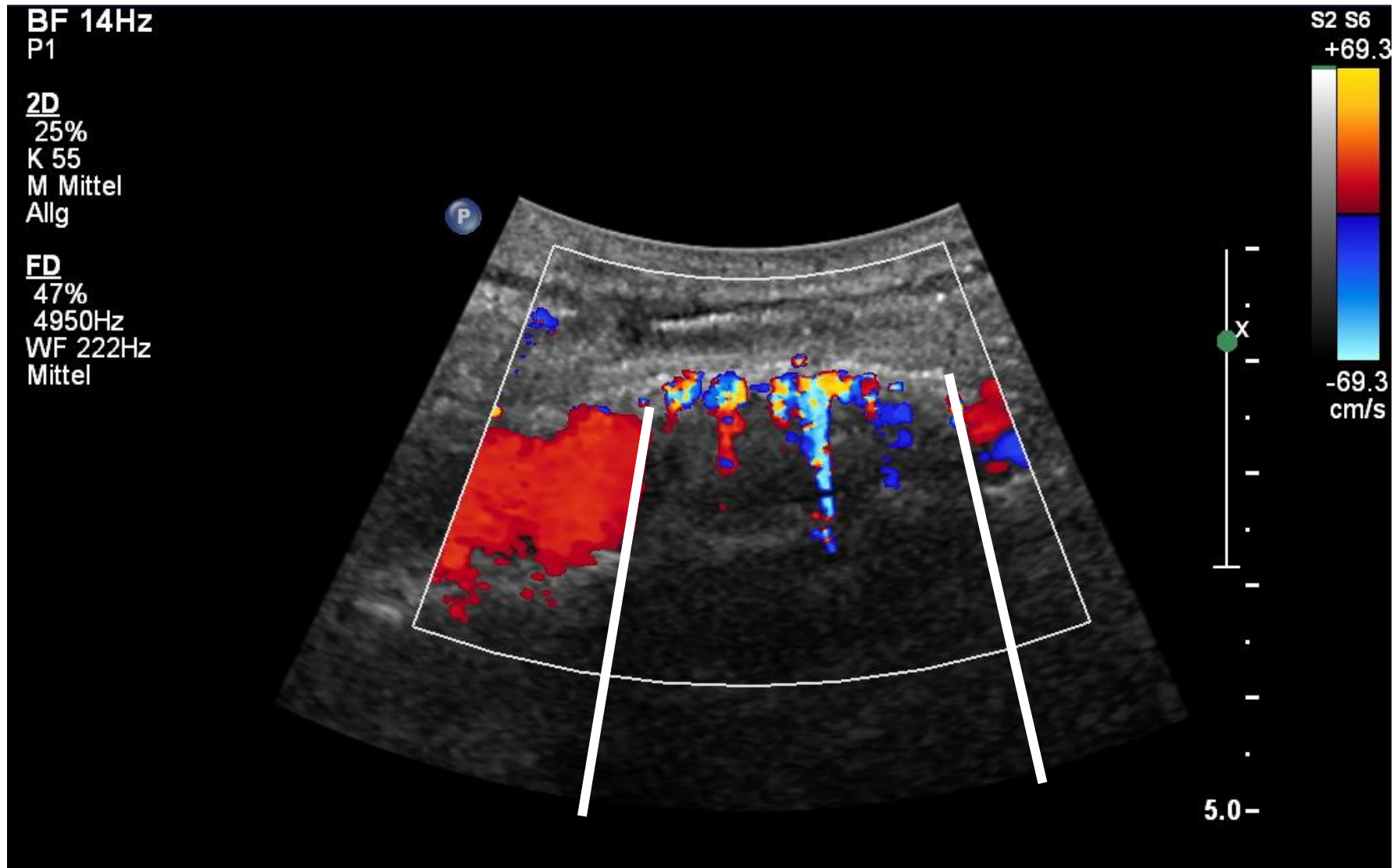
BF 21Hz
P1

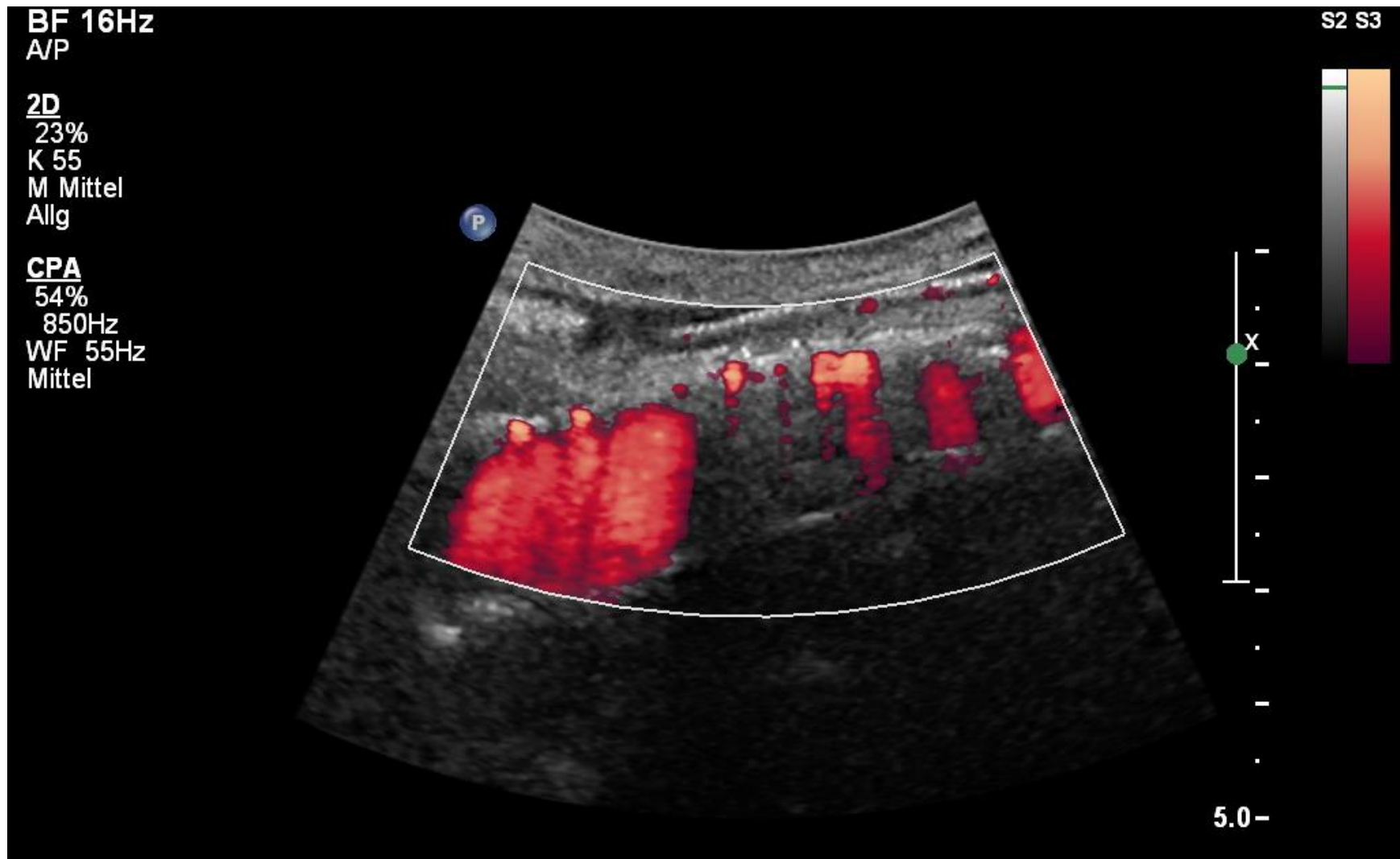
2D
53%
K 50
M Niedrig
Allg

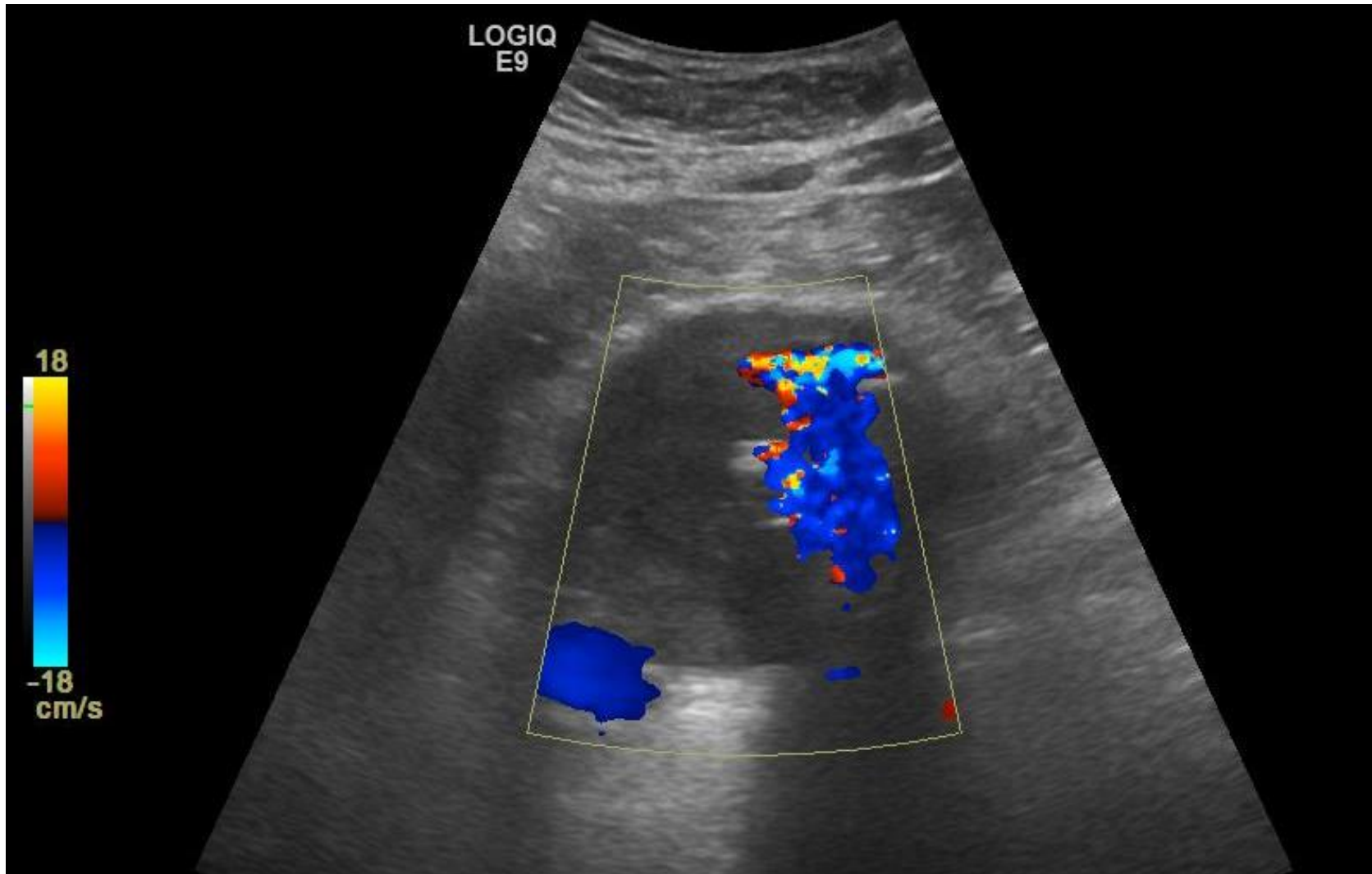
FD
64%
7000Hz
WF 280Hz
Mittel

P



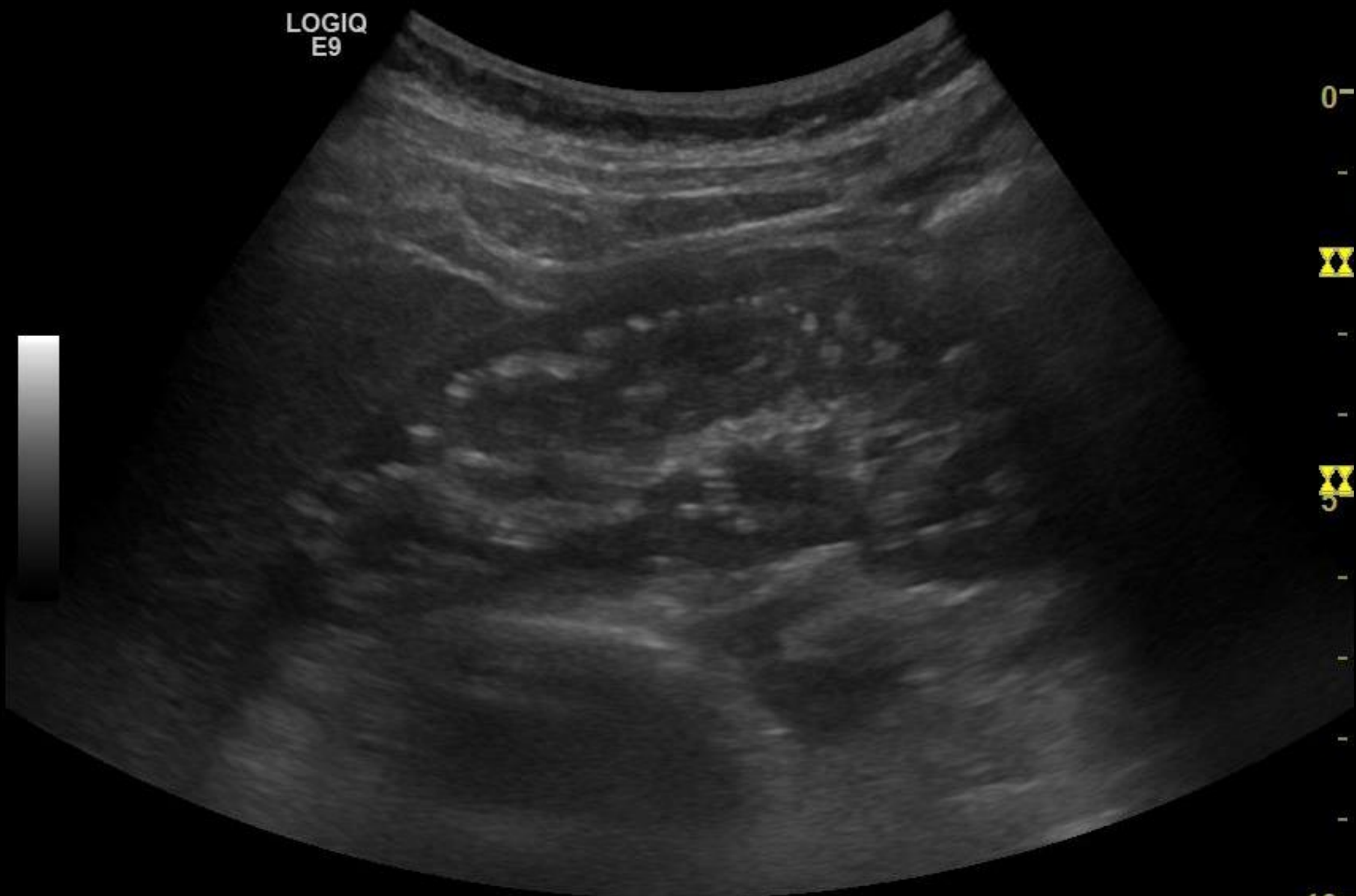






EVAR: endovascular aneurysm repair

LOGIQ
E9

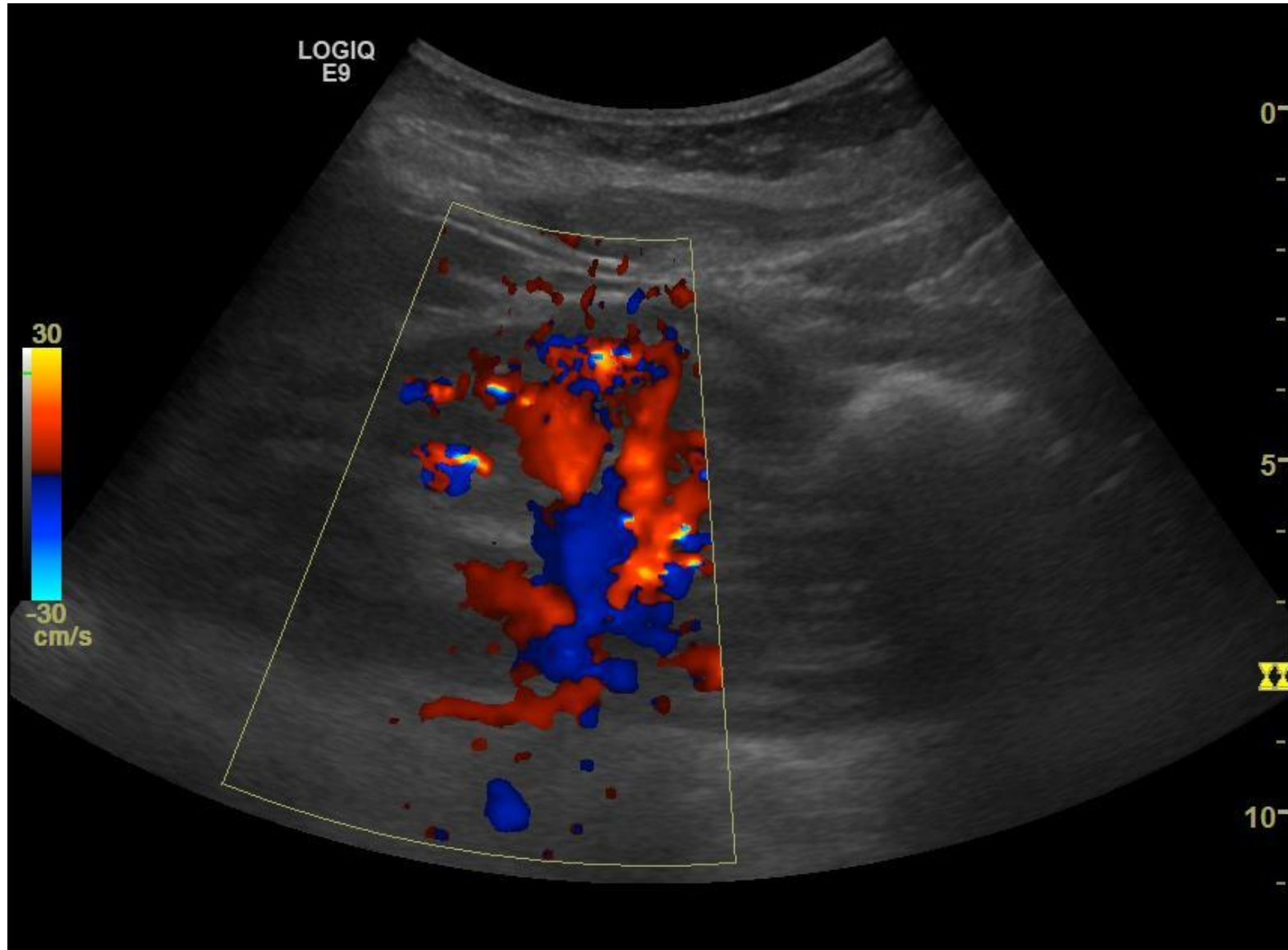


0-

5

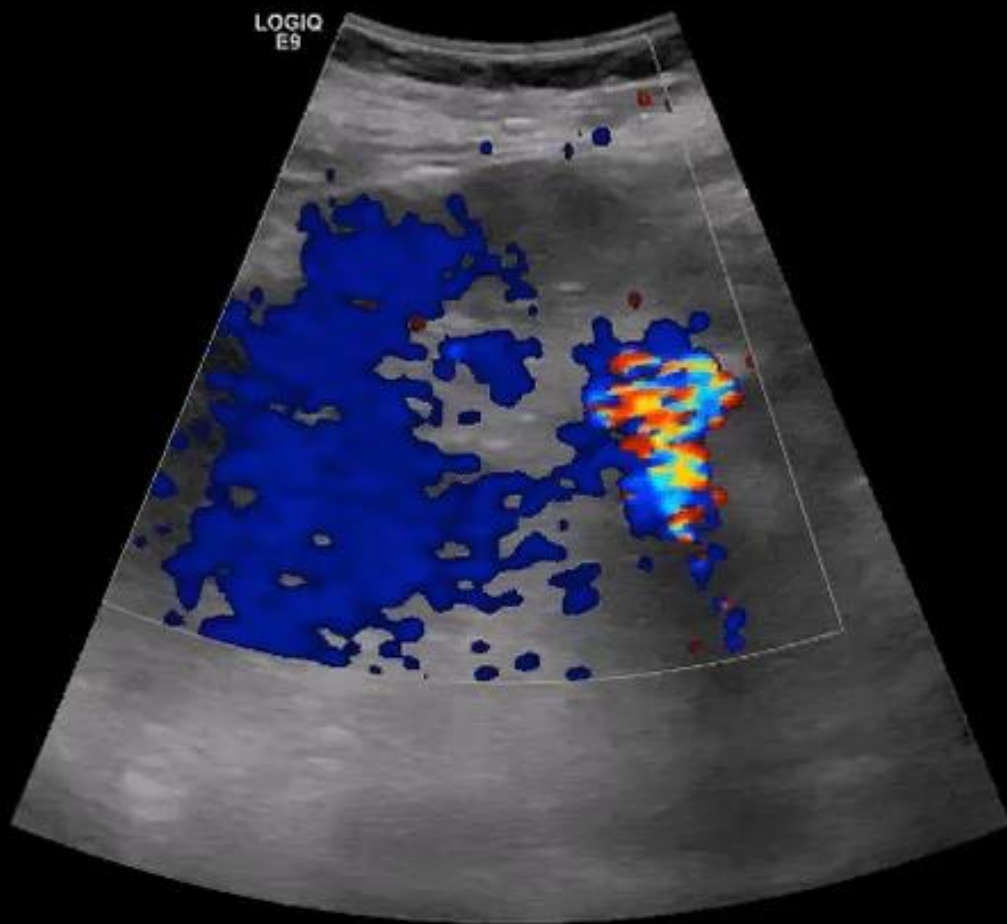
5

10-





LOGIQ
E9

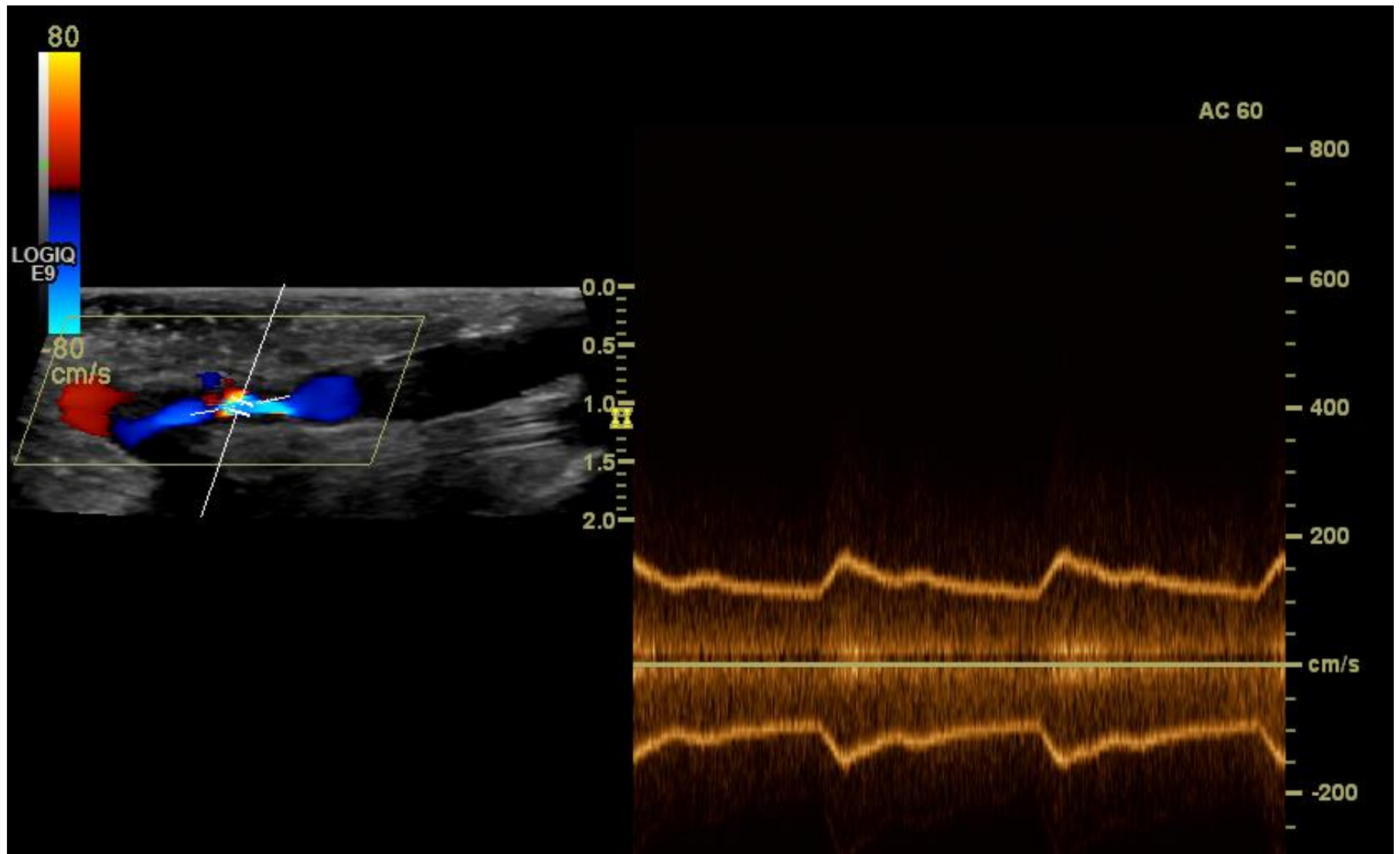


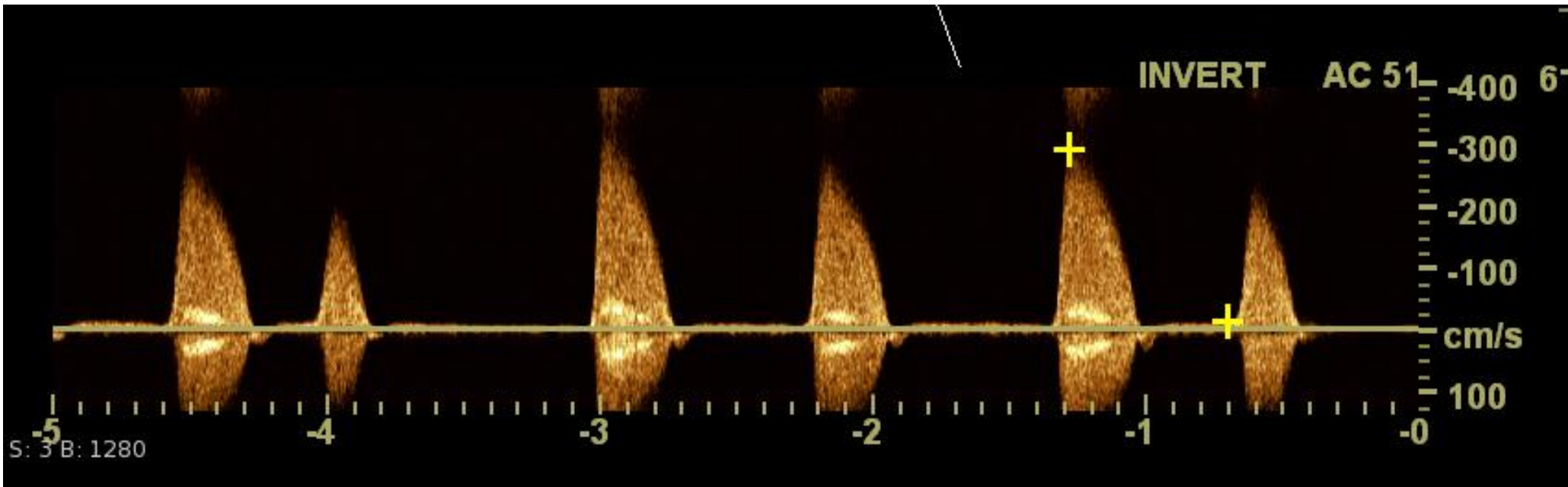
0°

5°

II

10°





Artefakte

- Spiegelartefakte
- Schallschatten
- "Twinkling"
- "Möwenschrei"

